

Take the CLEANER RIVER Quiz!

1. What are storm drains?

- a. Devices to filter rain water so we can drink it
- b. Sewer drains in the streets
- c. Garbage disposals in the streets
- d. Secret gateways to the center of the Earth



2. After it rains in Milwaukee, where does the rain go?

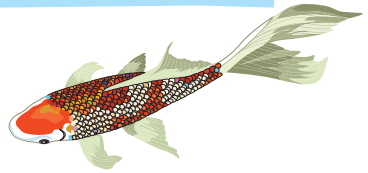
- a. To the movies
- b. The Hoover Dam
- c. To rivers, streams and Lake Michigan
- d. To planet Jupiter

3. What is the source of Milwaukee's drinking water?

- a. Lake Michigan
- b. The Bubbler
- c. A deep well in Minnesota
- d. The North Pole

4. Is it okay to wash my car in the driveway or in the street?

- a. Yes, soapy water cleans the rivers
- b. No, wash it over a storm drain
- c. Yes, that's what streets are for.
- d. No, it will pollute our waters



5. What is the best way to dispose of pet waste?

- a. Leave it in the street
- b. Wrap it in a bag and throw it in the garbage
- c. Put it under your sister's pillow
- d. Flush it down the toilet

6. What should I do with used motor oil and antifreeze?

- a. Dump it in the street
- b. Dump it in your yard
- c. Pour it on your ice cream
- d. Take it to a HHW collection center for recycling

7. What is household hazardous waste (HHW)?

- a. Your brother's dirty socks
- b. Your cat's litter box
- c. Oil based paint and paint remover
- d. That old container of leftovers in the fridge

8. Grass clippings are natural - can't we just sweep them into the streets?

- a. Yes, they dissolve overnight
- b. No, they pollute our waters
- c. Yes, they feed the sewer rats
- d. No, sprinkle them on spaghetti

CLEANER RIVER Quiz ANSWERS

1. B) Sewer drains in the streets

Storm drains and the city's storm water system were built to help prevent our city from flooding when it rains and when the snow melts.

2. C) To rivers, streams and Lake Michigan

In most areas of the city, storm drains lead to sewer pipes that empty into our rivers, streams and the lake. What goes down storm drains does not get cleaned by MMSD. To protect Lake Michigan, keep waste out of the streets and storm drains.

3. A) Lake Michigan

Milwaukee's drinking water comes from Lake Michigan and the rivers flowing into it. The water is first cleaned at the Milwaukee Water Works purification plant before entering the drinking water system.

4. D) No, it will pollute our waters

The dirt, oils, grease, and metals from your car will contaminate our waterways if they are washed into streets and storm drains.

5. B or D) Wrap it or flush it

Pet waste carries illness-causing organisms. Nutrients in animal waste are food for weeds, algae and bacteria which choke out fish by making the water cloudy, green and stinky.

6. D) Take it to a HHW collection center for recycling

Milwaukee residents may take used motor oil and antifreeze to the city's Self-Help Centers: **City of Milwaukee Self Help Station** - 3879 West Lincoln Ave.
Veolia Environmental Services - W124 N9451 Boundary Rd.
Veolia Environmental Services - 10518 South 124th St.

7. C) Oil-based paints and paint removers

Take household hazardous waste to the special collection facilities above or visit www.mmsd.com/hhw.aspx for mobile collection dates and locations or call (414) 272-5100 for more information.



8. B) No, they pollute our waters

Sweep grass clippings back onto the lawn after mowing. They'll help fertilize the grass. You can also put them in a compost pile or use them as mulch to control weeds. If they wash into our rivers they'll fertilize weeds, algae and bacteria which use up oxygen in the water that the fish need to breathe.